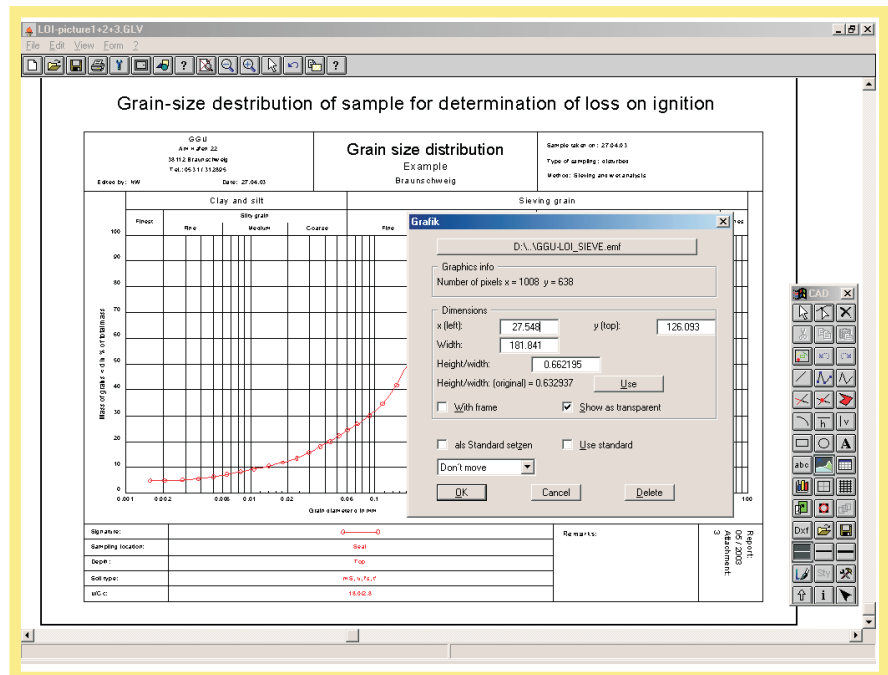
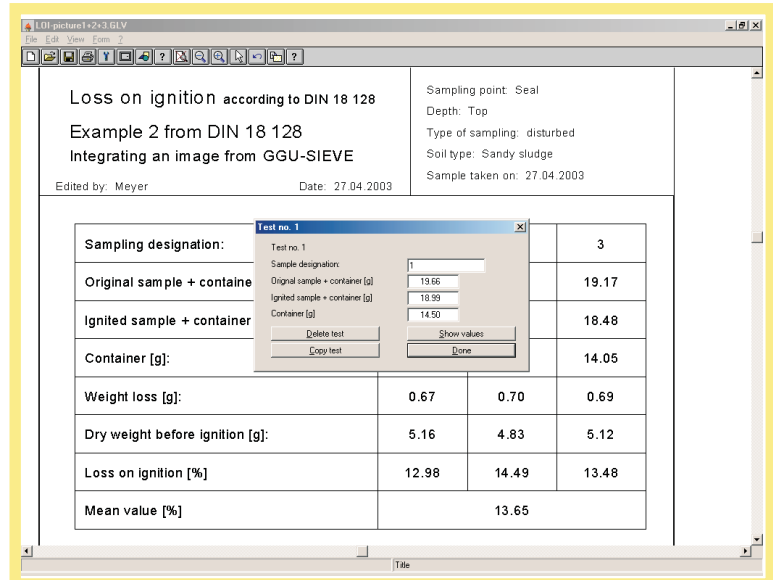


Description

GGU-LOI - evaluation and presentation of loss-on-ignition.

A MiniCAD system is available for additional labelling of graphics. The output of the results in a protocol or as a diagram can be carried out on the screen, or to a printer or plotter.

As data input is in accordance with Windows conventions it can be learnt almost without the use of a handbook. The graphic output supports the true-type fonts provided by Windows, so that you can be sure of an excellent layout. Colour output and bitmap graphics are supported.



| | |
|--|---|
| GGU Am Hafen 22 38112 Braunschweig Tel: 0531/312895 | Report: 9999 / 03 Appendix: 4 |
| Loss on ignition according to DIN 18 128 Example 2 from DIN 18 128 Integrating an image from GGU-SIEVE Edited by: Meyer Date: 27.04.2003 | Sampling point: Seal Depth: Top Type of sampling: disturbed Soil type: Sandy sludge Sample taken on: 27.04.2003 |

| | | | |
|----------------------------------|-------|-------|-------|
| Sampling designation: | 1 | 2 | 3 |
| Original sample + container [g]: | 19.66 | 19.49 | 19.17 |
| Ignited sample + container [g]: | 18.99 | 18.79 | 18.48 |
| Container [g]: | 14.50 | 14.66 | 14.05 |
| Weight loss [g]: | 0.67 | 0.70 | 0.69 |
| Dry weight before ignition [g]: | 5.16 | 4.83 | 5.12 |
| Loss on ignition [%] | 12.98 | 14.49 | 13.48 |
| Mean value [%] | 13.65 | | |

Grain-size distribution of sample for determination of loss on ignition

