

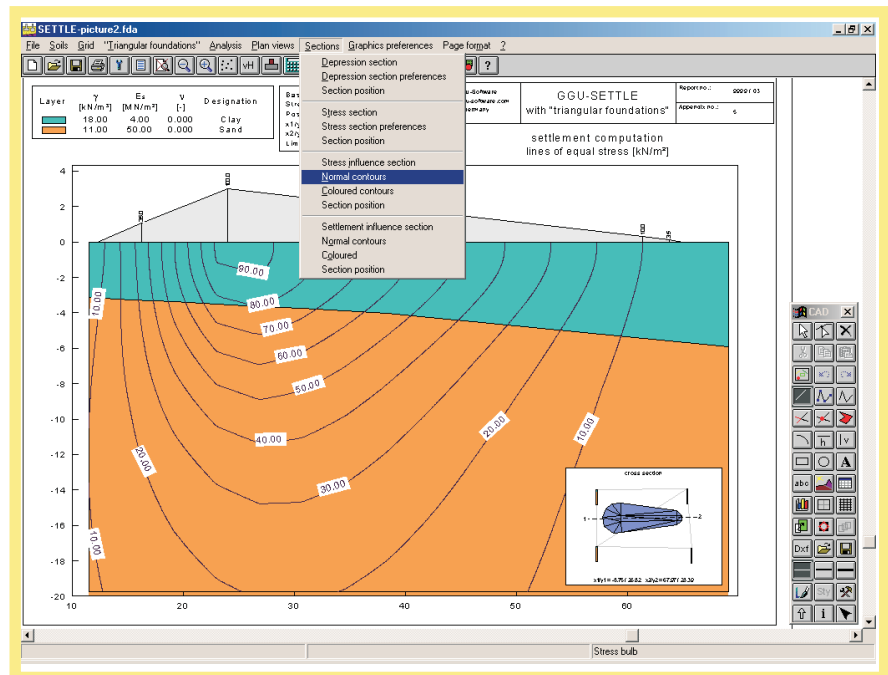
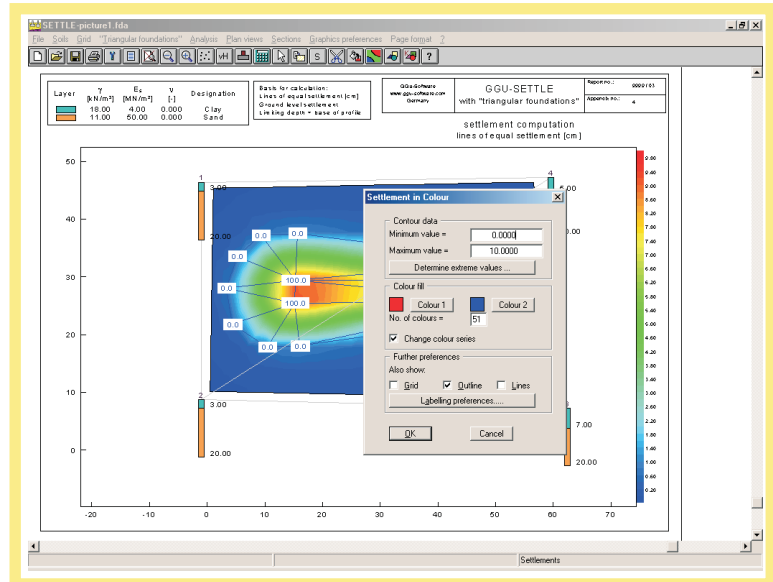
**Description**

*GGU-SETTLE - foundation settlement of triangular and rectangular foundations.*

*The GGU-SETTLE program allows the calculation of foundation settlement using rectangular or triangular foundations, including mutual influence. The stress distribution at the base of the foundation can change in a linear manner in all directions.*

**Capabilities:**

- Calculation of foundation settlement
- Consideration of mutual influence of neighbouring foundations
- Calculates settlement at any point inside or outside of the foundation
- Calculates settlement at any depth
- Calculates settlement at the base of any horizon
- Calculates settlement of any horizon
- Complete input of system geometry, if desired, using the mouse
- Excavation unloading can be taken into account. With a given excavation unloading, the resulting load re-application can be taken into account with a constrained modulus for load re-application
- Calculation of boundary depth at x% of overburden stress, as a multiple of foundation width, or as a fixed value
- Generation of footing foundations, circular foundations and annular foundations
- Calculation and presentation of settlement depressions
- Calculation and presentation of stress distribution (also as isoline plan = stress bulb)
- Calculation and presentation of lines of equal settlement, in plan or in any vertical section
- Presentation of calculation results in tables
- Presentation of a legend with soil characteristics
- Presentation of a legend with general



*information on your initial calculation data*

- Mini-CAD system, allowing free use of text and other graphic elements in your forms

